

Anti-H_GCGR hIgG2 Antibody(volagidemab)

Product information

| | |
|-----------------|--------|
| GM-84555AB-10 | 10 µg |
| GM-84555AB-100 | 100 µg |
| GM-84555AB-1000 | 1 mg |

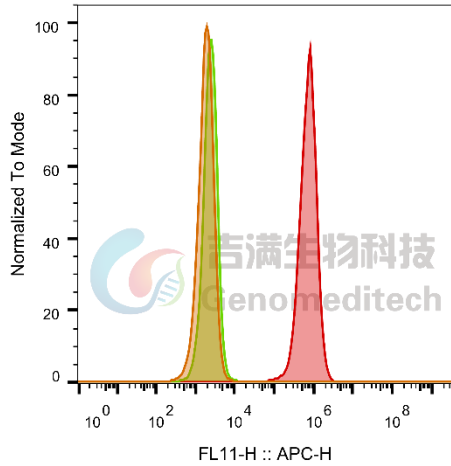
Antibody Information

| | |
|--------------------|---|
| Species Reactivity | Human; |
| Clone | GCGR |
| Source/Isotype | Monoclonal human IgG2, κ |
| Application | Flow cytometry |
| Specificity | Detects GCGR |
| Gene | GCGR |
| Other Names | Glucagon R, GCGR, Glucagon receptor |
| Gene ID | 2642(Human);14527 (Mouse) |
| Background | The Glucagon Receptor (GCGR) is a G protein-coupled receptor primarily expressed in the liver, kidney, and intestines. It serves as the receptor for glucagon, activating the adenylate cyclase pathway to promote glycogen breakdown and gluconeogenesis in the liver, thereby raising blood glucose levels. In recent years, research on GCGR has been increasing, including the development of GCGR agonists or antagonists to regulate blood glucose levels, exploring the role of GCGR in insulin resistance, fat metabolism, and appetite regulation, among others. |
| Storage | Store at 2-8°C short term (1-2 weeks). Store at ≤ -20°C long term. Avoid repeated freeze-thaw. |
| Formulation | Phosphate-buffered solution, pH 7.2. |
| Endotoxin | < 1 EU/mg, determined by LAL gel clotting assay |

Data Examples

Flow cytometry

The recommended usage range is 0.5-4 µg per test. H_GCGR CHO-K1 Cell Line (Catalog # GM-C35726) was stained with Anti-H_GCGR hlgG2 Antibody(volagidemab) (Catalog # GM-84555AB) or isotype control antibody, followed by anti-Human IgG APC-conjugated Secondary Antibody.

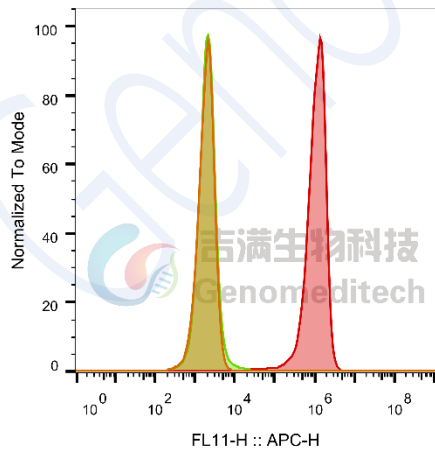


| SampleID | Geometric Mean : FL11-H |
|------------------------------------|-------------------------|
| CHO-K1 anti-GCGR+APC-2nd Ab | 1839 |
| CHO-K1 H_GCGR H_lgG+APC-2nd Ab | 2414 |
| CHO-K1 H_GCGR anti-GCGR+APC-2nd Ab | 6.80E5 |

Fig. FACS

Flow cytometry

The recommended usage range is 0.5-4 µg per test. Mouse_GCGR HEK-293 Cell Line(Catalog #GM-C35727) was stained with Anti-H_GCGR hlgG2 Antibody(volagidemab) (Catalog # GM-84555AB) or isotype control antibody, followed by anti-Human IgG APC-conjugated Secondary Antibody.



| SampleID | Geometric Mean : FL11-H |
|---|-------------------------|
| HEK-293 anti-GCGR+APC-2nd Ab | 1881 |
| HEK-293 Mouse_GCGR H_lgG+APC-2nd Ab | 2030 |
| HEK-293 Mouse_GCGR anti-GCGR+APC-2nd Ab | 1.02E6 |

Fig. FACS